

## 人非小细胞肺癌细胞 A549 说明书

**目录号:** SCSP-503

**细胞名称:** A549

**细胞描述:** 人非小细胞肺癌细胞 A549 来源于 58 岁的白人男性肺癌组织, 由 D.J. Giard 等人建立于 1972 年。M. Lieber 发现 A549 可以通过胞苷二磷酸胆碱途径合成高比例的不饱和脂肪酸卵磷脂。

**物种:** 白人, 男性, 58 岁

**组织:** 肺

**细胞来源:** 资源库留存

**生物安全等级:** BSL-1

**完全培养液配方:** 见下方备注

**批次/冻存日期:** 详见 冻存管/培养瓶 标识

**参考传代周期:** 每周 2-3 次

**参考传代比例:** 1:3

**参考换液频率:** 每周 2-3 次

**冻存液配方:** 完全培养液 95%, DMSO 5%

**细胞形态:** 上皮样, 贴壁生长

**支原体检测结果:** 阴性

**STR 鉴定结果:**

Amelogenin: X,Y

CSF1PO: 10,12

D13S317: 11

D16S539: 11,12

D5S818: 11

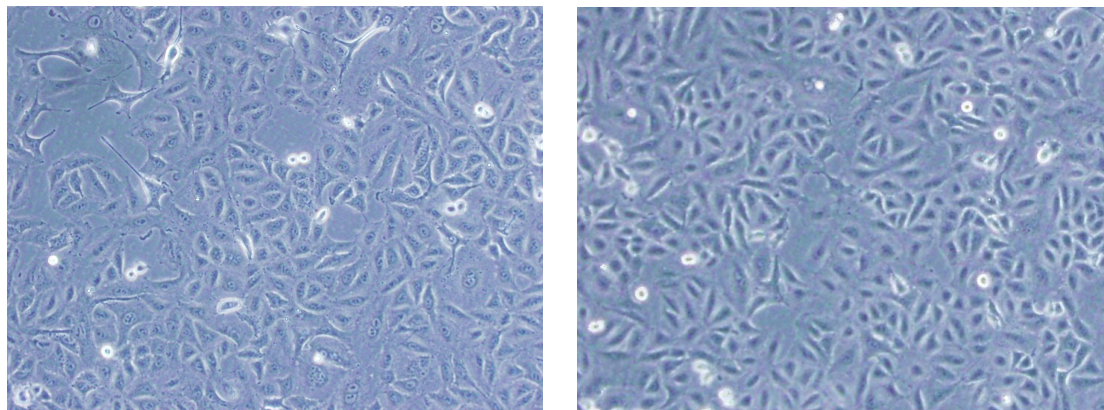
D7S820: 8,11

THO1: 8,9.3

TPOX: 8,11

vWA: 14

**A549 细胞照片:**



**参考文献:**

Giard DJ, et al. In vitro cultivation of human tumors: establishment of cell lines derived from a series of solid tumors. *J. Natl. Cancer Inst.* 51: 1417-1423, 1973. PubMed: [4357758](#)

Mayr GA, Freimuth P. A single locus on human chromosome 21 directs the expression of a receptor for adenovirus type 2 in mouse A9 cells. *J. Virol.* 71: 412-418, 1997. PubMed: [8985365](#)

Goodrum FD, Ornelles DA. The early region 1B 55-kilodalton oncoprotein of adenovirus relieves growth restrictions imposed on viral replication by the cell cycle. *J. Virol.* 71: 548-561, 1997. PubMed: [8985383](#)

St. Geme JW, et al. Characterization of the genetic locus encoding Haemophilus influenzae type b surface fibrils. *J. Bacteriol.* 178: 6281-6287, 1996. PubMed: [8892830](#)

Horikami SM, et al. The Sendai virus V protein interacts with the NP protein to regulate viral genome RNA replication. *Virology* 222: 383-390, 1996. PubMed: [8806522](#)

Huang S, et al. Adenovirus interaction with distinct integrins mediates separate events in cell entry and gene delivery to hematopoietic cells. *J. Virol.* 70: 4502-4508, 1996. PubMed: [8676475](#)

Goodrum FD, et al. Adenovirus early region 4 34-kilodalton protein directs the nuclear localization of the early region 1B 55-kilodalton protein in primate cells. *J. Virol.* 70: 6323-6335, 1996. PubMed: [8709260](#)

Fang R, Aust AE. Induction of ferritin synthesis in human lung epithelial cells treated with crocidolite asbestos. *Arch. Biochem. Biophys.* 340: 369-375, 1997. PubMed: [9143343](#)

Geiger T, et al. Antitumor activity of a PKC-alpha antisense oligonucleotide in combination with standard chemotherapeutic agents against various human tumors transplanted into nude mice. *Anticancer Drug Des.* 13: 35-45, 1998. PubMed: [9474241](#)

Evdokiou A, Cowled PA. Tumor-suppressive activity of the growth arrest-specific gene GAS1 in human tumor cell lines. *Int. J. Cancer* 75: 568-577, 1998. PubMed: [9466658](#)

Giavedoni LD, Yilma T. Construction and characterization of replication-competent simian immunodeficiency virus vectors that express gamma interferon. *J. Virol.* 70: 2247-2251, 1996. PubMed: [8642649](#)

Bartz SR, et al. Human immunodeficiency virus type 1 cell cycle control: Vpr is cytostatic and mediates G2 accumulation by a mechanism which differs from DNA damage checkpoint control. *J. Virol.* 70: 2324-2331, 1996. PubMed: [8642659](#)

Garofalo R, et al. Transcriptional activation of the interleukin-8 gene by respiratory syncytial virus infection in alveolar epithelial cells: nuclear translocation of the RelA transcription factor as a mechanism producing airway mucosal inflammation. *J. Virol.* 70: 8773-8781, 1996. PubMed: [8971006](#)

Jamaluddin M, et al. Inducible translational regulation of the NF-IL6 transcription factor by respiratory syncytial virus infection in pulmonary epithelial cells. J. Virol. 70: 1554-1563, 1996. PubMed: [8627674](#)

Lewis JA, et al. Inhibition of mitochondrial function by interferon. J. Biol. Chem. 271: 13184-13190, 1996. PubMed: [8662694](#)

Lieber M, et al. A continuous tumor-cell line from a human lung carcinoma with properties of type II alveolar epithelial cells. Int. J. Cancer 17: 62-70, 1976. PubMed: [175022](#)

**备注:**

1. 人非小细胞肺癌细胞 A549 完全培养液配方 (100 ml) :

F-12K (Invitrogen, 21127022)	89 ml
FBS (Gibco)	10 ml
Glutamax (Invitrogen, 35050061)	1 ml

2. 我库冻存时, 每支冻存管约含  $1 \times 10^6$  细胞量, 体积为  $500 \mu\text{l}$ , 预期存活率  $70\%$ , 建议复苏至 1 个 T25 培养瓶中。