

## 人前列腺癌细胞 PC-3 说明书

**目录号:** SCSP-532

**细胞名称:** PC-3

**细胞描述:** 人前列腺癌细胞 PC-3 来源于一名 62 岁 IV 级前列腺癌白人男性患者的骨髓转移灶。此细胞酸性磷酸酶 (acid phosphatase) 和 5- $\alpha$ - 睾丸激素还原酶 (testosterone-5-alpha reductase) 活性表达低。

**物种:** 白人, 男性, 62 岁

**组织:** 前列腺癌; 分离自转移灶: 骨

**细胞来源:** 2013 年引进

**生物安全等级:** BSL-1

**完全培养液配方:** 见下方备注

**批次/冻存日期:** 详见 冻存管/培养液 标识

**参考传代周期:** 3-4 天

**参考传代比例:** 1:3-1:6

**参考换液频率:** 每周 2-3 次

**冻存液配方:** 完全培养液 95%, DMSO 5%

**细胞形态:** 贴壁生长

**支原体检测结果:** 阴性

**STR 检测结果:**

Amelogenin: X

CSF1PO: 11

D13S317: 11

D16S539: 11

D5S818: 13

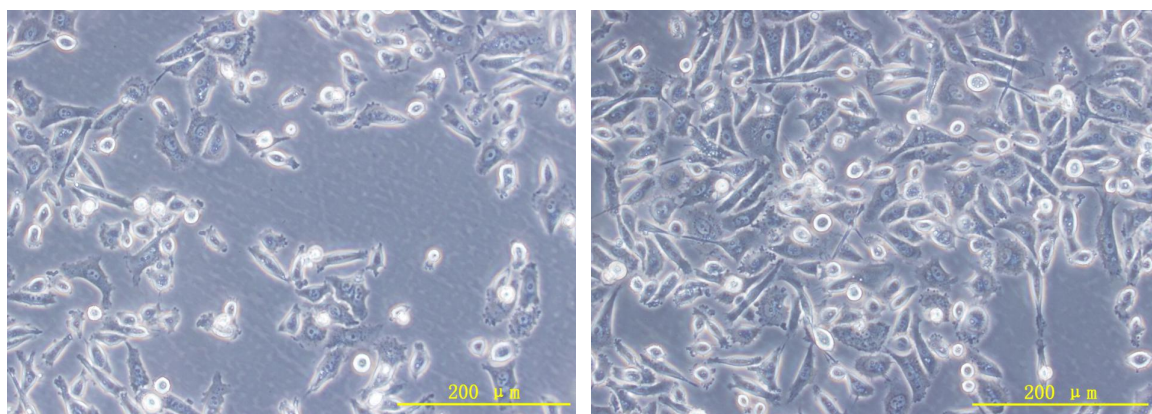
D7S820: 8,11

THO1: 6,7

TPOX: 8,9

vWA: 17

## PC-3 细胞照片



## 参考文献:

Kaighn ME, et al. Establishment and characterization of a human prostatic carcinoma cell line (PC-3). *Invest. Urol.* 17: 16-23, 1979. PubMed: [447482](#)

Chen TR. Chromosome identity of human prostate cancer cell lines, PC-3 and PPC-1. *Cytogenet. Cell Genet.* 62: 183-184, 1993. PubMed: [8428522](#)

Ohnuki Y, et al. Chromosomal analysis of human prostatic adenocarcinoma cell lines. *Cancer Res.* 40: 524-534, 1980. PubMed: [7471073](#)

Sheng S, et al. Maspin acts at the cell membrane to inhibit invasion and motility of mammary and prostatic cancer cells. *Proc. Natl. Acad. Sci. USA* 93: 11669-11674, 1996. PubMed: [8876194](#)

Umekita Y, et al. Human prostate tumor growth in athymic mice: inhibition by androgens and stimulation by finasteride. *Proc. Natl. Acad. Sci. USA* 93: 11802-11807, 1996. PubMed: [8876218](#)

Carter RE, et al. Prostate-specific membrane antigen is a hydrolase with substrate and pharmacologic characteristics of a neuropeptidase. *Proc. Natl. Acad. Sci. USA* 93: 749-753, 1996. PubMed: [8570628](#)

Nupponen NN, et al. Genetic alterations in prostate cancer cell lines detected by comparative genomic hybridization. *Cancer Genet. Cytogenet.* 101: 53-57, 1998. PubMed: [9460501](#)

Geiger T, et al. Antitumor activity of a PKC-alpha antisense oligonucleotide in combination with standard chemotherapeutic agents against various human tumors transplanted into nude mice. *Anticancer Drug Des.* 13: 35-45, 1998. PubMed: [9474241](#)

Su ZZ, et al. Surface-epitope masking and expression cloning identifies the human prostate carcinoma tumor antigen gene PCTA-1 a member of the galectin gene family. *Proc. Natl. Acad. Sci. USA* 93: 7252-7257, 1996. PubMed: [8692978](#)

## 备注:

### 1. 人前列腺癌细胞 PC-3 细胞完全培养液配方 (100 ml) :

F-12K (Invitrogen, 21127022)	89 ml
FBS (Gibco)	10 ml
Glutamax (Invitrogen, 35050061)	1 ml

2. 我库冻存时，每支冻存管约含  $1 \times 10^6$  细胞量，体积为  $500 \mu\text{l}$ ，预期存活率  $70\%$ ，建议复苏至 1 个 T25 培养瓶中。

中国科学院典型培养物保藏委员会细胞库/干细胞库